

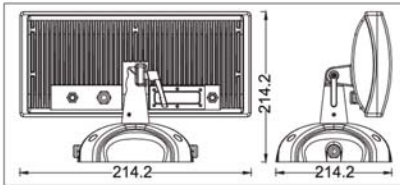
# LED

LED VIVID WASH SERIES



## LED Vivid Wash III (High Power LED) (Direct DMX Control) LW-330X150-LN-PC

Dimensional Diagram



LED Vivid Wash III is an energy saving, RGB LED based, wash fixture, Incorporating 36 RGB Power LEDs the LED Vivid Wash III produces full color 16.7M true 24 Bit color changing effects for architectural and decorative illumination.

LED Vivid Wash III can be operated standalone, master slave with built in pre-programmed effects or directly with and standard DMX-512 controller. The LED Vivid Wash III is engineered with push button waterproof external LED display based user interface for setting the mode of operation or DMX Address. The LED Vivid Wash III used only 3 Channels of DMX to enable external programming of linear color changing, step based scenes as desired by the lighting designer. You can also add a easy to use pre-programmed external controller if you are DMX challenged such as the SRC-AI-100. For more information on controller functionality refer to the control section of this catalog.

The LED Vivid Wash III housing is composed of Aluminum Die Cast fixture housing, heat treated glass aperture plate, rated at IP65. The unique mounting system enables easy adjustment of the projection angles from 360° H and 150° V, enabling optimization of the effect.

# LED

141 Cassia Way STE. C  
Henderson, NV 89014  
Ph. 702.568.8742 \* 800.700.5483  
Fax 702.568.8753  
www.LEDLINC.com

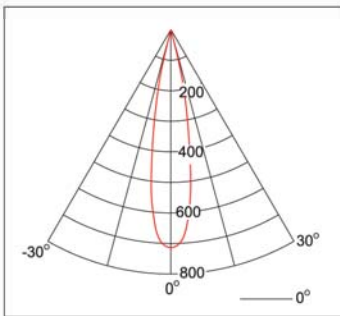
This fixture must be installed by a qualified electrician. **LED** is not responsible if its fixture are not installed according to local safety standards. Please leave a copy of these instructions for the person responsible for the maintenance of the installation.



### Candle Power Distribution

Light Source Specification	
Light Source Voltage	220V
Light Source Current	0.162A
Light Source Power Consumption	18.3W

Testing Result	
Max Light Intensity	709.48cd
Total Luminous Flux	233Lm
Lamp Efficacy	8.9m/w
Beam Angle	17°



### Specifications

LED Color Range	RGB 16.7M Linear Color Control
Light Source	36pcs Power LED (R12, G12, B12)
Beam Angle	25°
Light projecting distance	20m
Digital Interface	Standard DMX protocol compatible
Control system	SRC-AI-100 Address writer/simple controller
DMX Channels	3 Channels
Fixture Housing	Die Cast Powder Coated Aluminum
Fixture Color	Black Standard
	Add a (A) to the end of the part number for White housing.
Connecting Mode	Standard signal cord and power cord
	Control and Installation Type dependant (See Page 231)
Connector	3-Pin Control and Installation Type dependant (See Page 231)
Aperture Glass	Tempered Glass
Mounting System	Adjustable 360° H and 150° V

### Electrical Specifications

Operating Voltage	90-264V AC/24V DC
Operating Current (Max)	0.2A
Power Consumption	48Watts
IP Rating	IP65

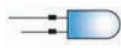
### Environmental Specifications

Operating Temperature	-20°C-40°C (industrial grade components)
Dimensions	L408xW71xH83 (mm)
Weight	1.25Kg

### DMX Function Chart

Mode	DMX Channels	Channel	Name	Value	Function
1 Pixel	3	1	Red	0-255	0-100% Intensity
		2	Green	0-255	0-100% Intensity
		3	Blue	0-255	0-100% Intensity

Vivid Wash III is available in Black or White Finish Standard.  
Custom Finishes upon request (Volume Dependant)



### Luminous Flux

Color	White	Red	Green	Blue
Total Output (lumens)	233	100.8	134.2	15.2
Power (Watts)	34.8	27.4	12.5	8.3
Efficacy (lm/W)	6.7	3.7	10.7	1.8

### Diverse Illumination Under Different Distances

Color	White	Red	Green	Blue
1m	683	281	334	117
2m	171	71.6	84.6	31.3
3m	76.4	31.9	38.6	13.4
4m	43.7	18.2	21.8	7.4
5m	28.2	12.2	13.4	3.1

### Lumiance Distribution

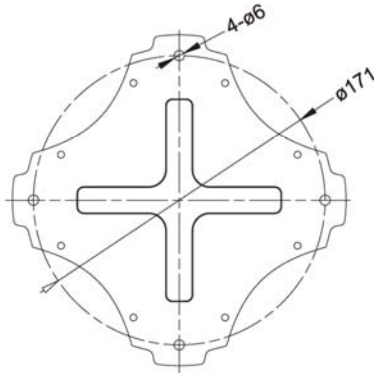
Unit: Lux  
Distance: 1m

1m	2.8	5.9	8.2	8.0	6.1	3.1	1m
	6.0	19.1	15.8	41.9	14.7	5.2	
0m	10.1	53.1	285	235	38.9	8.3	0m
	9.3	49.5	218	207	34.7	7.8	
	5.1	15.3	33.6	32.1	14.2	5.1	1m
	2.5	4.8	7.3	7.1	5.0	2.6	
	1m		0m				1m

### Built in Pre-Programmed Effects

- Holder Color      Selectable HOLDER color. (16.7M variables)
- Strobing            Single color or transitional
- Cross Fade         Cross fade between colors
- Chasing             Color chasing
- Color Cycle         Cycling

### Base Installation Diagram

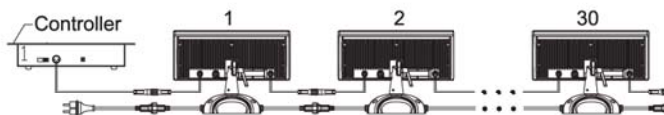


### Connection Examples

DMX 512 or SRC-AI-100

#### Example 1

Up to 30 units can be connected in this configuration without the need for a signal amplifier. See Example 2 for larger applications and requirements.



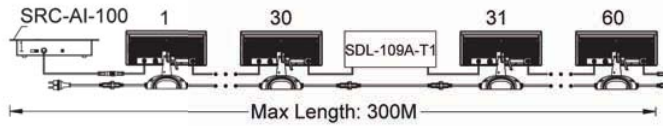
#### Controllers

DMX-512  
SRC-AI-100

\* Controllers sold separately

## DMX 512 or SRC-AI-100

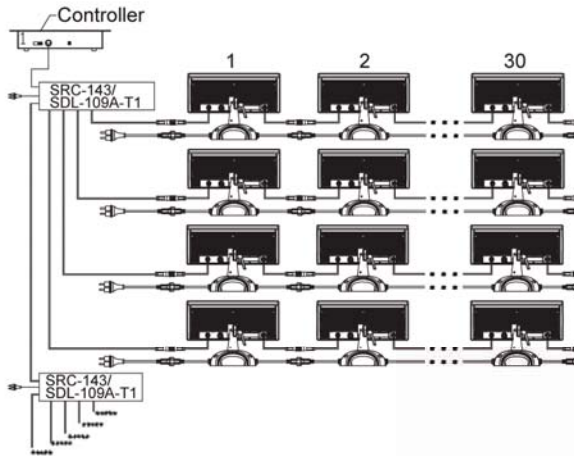
Example 2 (When more than 30 Fixtures from one controller is required)



Add (1) Signal Amplifier SDL-109A-T1 between each group of 30 fixtures. See control section of this catalog for more information on the SDL-109A-T1 Signal Amplifier.  
The maximum distance should not extend 150m between controller and the last lighting fixture.

## DMX 512 or SRC-AI-100

Example 3 (When more than 30 Fixtures from one controller is required and the distance of more than 150 Meters distance between the controller and last fixture is required)



Add (1) Signal Amplifier SRC-143 for every 4 groups of 30 fixtures (120 Total per SRC-143)  
Connect the output of the first SRC-143 to the input of the next SRC-143 to add additional groups.  
See of this catalog for more information on the SRC-143 Signal Amplifier.

Available Interconnection Cables  
DMX-512 Controllers direct to fixture types  
XLR-Male to Mini Female XLR  
Part# XLRM-M-XLRF

XLR-Female to Mini Male XLR  
Part# XLRF-M-XLRM

