

LED

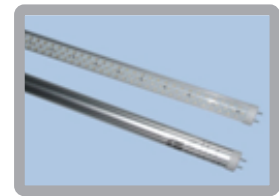
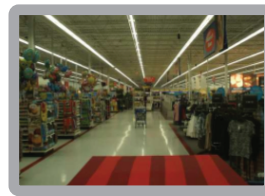
LIGHTING & ELECTRONIC DESIGN

PART #: T8-XXX-XX-XX-XXX-XX

Catalog #		Type
Projects		
Comments		Date
Prepared By		

LED's **LAMP SERIES T8™** is an optimized linear LED tube light that is designed to surpass traditional fluorescent T8 lamps. LED's T8 lamps are available in 4 foot (1220mm) length without compromising lumen output. The tube employs 288 state of the art LED chips, with a total power of just 18W. LED's T8 lamps have a lumen output of 1200 in pure white and 1000 in warm white, assures uniform brightness over entire length of the lamp.

LED's T8 lamp outputs are available in warm white (3000-3500K) or pure white (5000-6000K) light output. The T8 lamp replaces standard fluorescent tube lights and is produced for 110/120V input, eliminating the need for the ballast. The T8 lamp plugs directly into existing fluorescent Bi-pin sockets replacing standard lamps. The T8's housing is constructed of plastic and is humidity and moisture resistant. The lamp life is rated for approximately 50,000+ hours!



LAMP SERIES

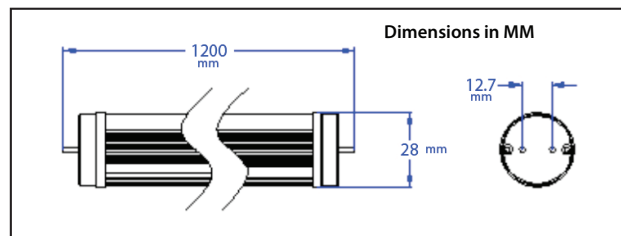
FEATURES:

- Energy efficient at 18W per 4 foot tube
- High lumen output: 1200 lm (pure white); 1000 lm (warm white)
- Long life rated at 50,000+ hours
- Eliminates ballast energy draw & replacement costs
- Dimensions: ϕ 28mm by 1200mm length
- 3 year warranty

APPLICATIONS:

- **Business Office Lighting**
- **Standard 2'x4' Trough Retrofits**
- **Residential Lighting**
- **Hospital Lighting**
- **Title 24 Bathroom Lighting**
- **Under-Cabinet & Kitchen Lighting**
- **Accent & Task Lighting**
- **Bus & Train Lighting**

DIAGRAM:

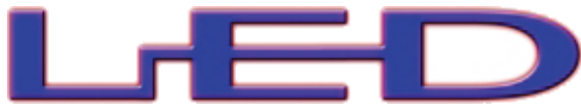


*Fit must be verified in end user fixtures.
See Physical Dimensions

Ordering Information:

T8						
Series	Cover Type	Voltage	Color	Wattage	Base	Non-Dimable
	F (Frosted) C (Clear)	110VAC 120VAC 240VAC 277VAC	PW (Pure White) WW (Warm White) <small>*Custom Colors Available</small>	18 20	G13	ND

Ordering Example: T8-110-PW-18-G13-ND



LIGHTING & ELECTRONIC DESIGN

PART #: T8-XXX-XX-XX-XXX-XX

Catalog #		Type
Projects		
Comments		Date
Prepared By		

LED T8 SPECIFICATIONS:

-Beam Angles	120°
-Dimension	Ø28 mm x 1200 mm
-Weight	19.4 oz. (550 g)
-Base	G13

ENVIROMENTAL SPECIFICATIONS:

-Temperature Range Ambient	14°F to 122°F (-10°C to 40°C); Pass Thermal Shock Testing; Humidity Range: 0 to 95% non-condensing humidity
----------------------------	---

LED T8 vs FLUORESCENT T8

-Power Consumption (watt)	18W	32W
-Utilised Luminous Flux (lm)	1200 lm	1152 lm
-Lifespan	50,000 hrs	8,000 hrs
-Daily Power Consumption (12 operating hours a day)	0.144	0.216
-Yearly Power Consumption	52.56	78.84
-Power Rate (US\$ hr-kwatt)		0.1003
-Yearly Electricity Costs (US\$)	5.27	7.91
-CO2 Emission (kg)	33.533	50.299

Power consumption of T8 LED tube saves 33.33% vs traditional T8 tube. *Not including maintenance costs

LED T8

90% Utilisation Efficiency

-LED	Utilisation Efficiency	=	Lighting Efficiency
80 lm/W	x 90%	x	72 lm/W

FLUORESCENT T8

40-60% Utilisation Efficiency

-FLUORESCENT:	Ballast Efficiency	Utilisation Efficiency	=	Lighting Efficiency
90 lm/W	x 70%	x 50%	x	31.5 lm/W

LAMP SERIES