

Catalog #		Type
Projects		
Comments		Date
Prepared By		

LED's **LAMP SERIES MR16™** is a self-ballasted, optimized LED light designed to surpass traditional Halogen lamps. Featuring a flow-through heat sink, LED's MR16 offers the latest exceptional heat-dissipation technology, eliminating bulky metal design while increasing overall lamp performance. LED's MR16 lamps are available in a 38, 60, and 120 degree beam angle with a 1, 3, 5, and 7 watt configuration package. The lamp employs state of the art LED chips, with a total power of up to 7W. With a lumen output of over 500 lm in true white and warm white, this lamp assures uniform brightness and light output.

The lamp outputs are available in warm white and true white, as well as our standard color selection. LED's MR16 lamps are also available in a specified custom color temperature range to suit our customer's individual needs. This lamp replaces standard Halogen and Incandescent MR16 lamps, and is produced for 12 VAC or DC input, with a GX5.3, GU10, E14, E11, or E26 base. The lamp is available in a dimmable or non-dimmable version, and plugs directly into existing low-voltage socket replacing standard Halogen lamps. The lamp life is rated for approximately 50,000+ hours!



FEATURES:

- Flow through heat sink: heat dissipation technology
- Available with CREE Chip or LUMILEDS Chip
- Available in 38, 60, and 120 degree beam angle
- High brightness: over 500 lumens in true white and warm white
- Rated for approximately 50,000 hours
- 2 year warranty
- RoHS compliant and UL listed
- Fits in most standard trims
- Available in E11, E14, E27, GU10, and GX 5.3 base
- Easy to Install
- Available in dimmable and non-dimmable

APPLICATIONS:

- Down Lighting
- Track Lighting
- Recess Lighting
- Spot Lighting
- Exhibit and Display Lighting
- Shop Window
- Bar
- Jewelry
- Hotel
- Meeting Room

MR16 V3 SPECIFICATIONS:

-Beam Angles	38°, 60°, 120° 50.5 mm x 45.5 mm (GX5.3 / GU5.3) 50.5 mm x 56.9 mm (GU10 / GZ10)
-Dimension	50.5 mm x 57.9 mm (E27 / E26) 50.5 mm x 80 mm (E14) 50.5 mm x 68.6 mm (E11)
-Weight	0.88 ~ 1.69 oz. (25 ~ 48 g)
-Base	GX 5.3 / GU10 / E27 / E14 / E11

FLUX CHARACTERISTICS: JUNCTION TEMPERATURE Tj = 25°C

-MR16	Total Power Consumption (watt)
	Lumileds CREE
	1W; 3W 7W
-True White (Max.)	120; 200 475
-Warm White (Max.)	70; 125 355

Ordering Information:

MR16	Series	Voltage	Beam Angle	Color	Wattage	Chip Type	Base	Dimability
		12V *Operates on both AC and DC Circuits	38 60 120	TW (True White) WW (Warm White)	1 *Available with Lumiled Chip Only 3 *Available with Lumiled Chip Only 7 *Available with Cree Chip Only	Lumileds (1W & 3W) Cree (7W)	E11 E14 E27 GU10 GX 5.3	D (E11, E14, E27, GU10 Only) ND



Ordering Example: MR16-12-38-TW-1-Cree-E11-ND

Catalog #		Type
Projects		
Comments		Date
Prepared By		

ENVIRONMENTAL SPECIFICATIONS:

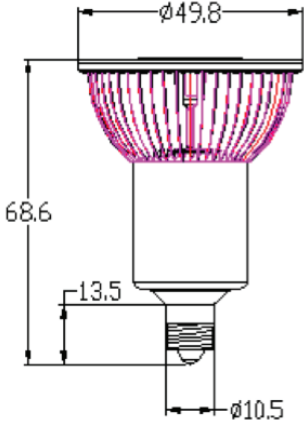
-Temperature Range Ambient 14°F to 104°F (-10°C to 40°C);
 Pass Thermal Shock Testing; Humidity Range:
 0 to 95% non-condensing humidity

OPTICAL CHARACTERISTICS:

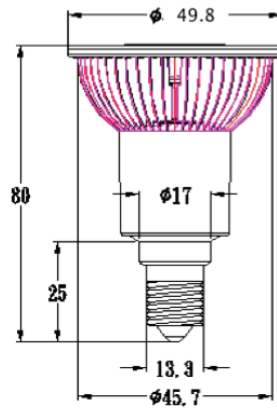
-Correlated Color Temperature
 -True White
 -Warm White

Dominant Wavelength (nm) or Color Temperature (K)	
Min.	Typ.
4500K	6500K
2540K	3100K
	10000K
	3500K

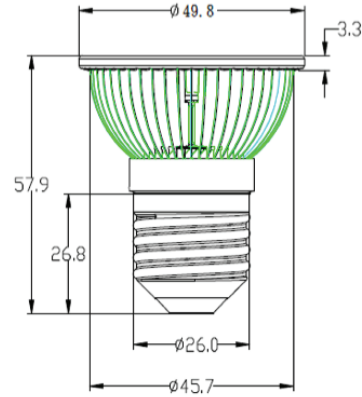
DIAGRAMS: (All Dimensions are in mm) *Fit must be verified in end user fixtures. See Physical Dimensions



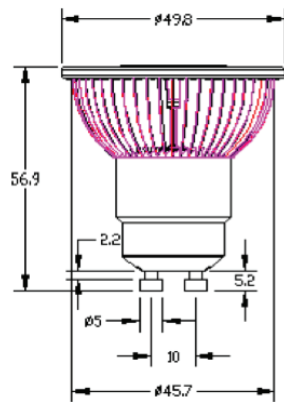
E11



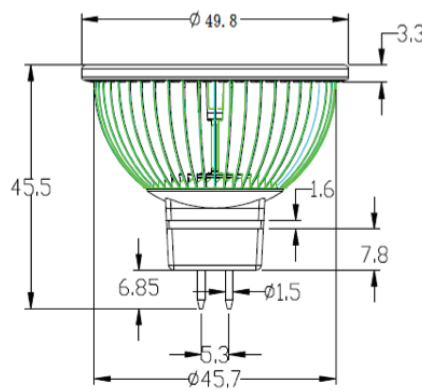
E14



E27



GU10



GX 5.3