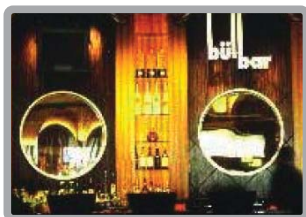


Catalog #		Type
Projects		
Comments		Date
Prepared By		

LED **QUANTUM SERIES™** features scallop free lighting with the industries easiest installation. Utilizing wedge base Xenon or Incandescent bulbs, Quantum offers a choice of white or warm white for long lasting illumination. The Quantum Xenon system provides near halogen color temperature and efficiency without the handling and mounting hazards associated with Halogen. Xenon lamps require no shielding, present no shattering danger, and have lower bulb temperatures. Quantum may be specified in a variety of lamp spacings and bulbs. It is dimmable, field cuttable and may be formed into curves and angles.

QUANTUM SERIES 12 or 24VAC parallel wired string lighting shall use T3 1/4 wedge base bulbs inserted in a clear polycarbonate socket 2"-12" O/C, to SPT-1, 10 gauge stranded tinned copper 2 conductor wire and shall operate at 12VAC or 24VAC as a single circuit with a maximum load not to exceed 20 amps per circuit as required by NEC Class I regulations.



FEATURES:

- Economical design
- Long life
- Even illumination
- Dimmable
- Field cuttable
- Easy to install
- ETL listed

APPLICATIONS:

- Theaters
- Restaurants & Bars
- Cove and Undercounter Lighting
- Auditoriums
- Hotels
- Casinos

ACCESSORIES:

CCL-1-X Plastic Color Cap
CCL-WS-X Silicone Shield
CCL-MC-X Mounting Clip
CCL-MB Mounting Bracket
CCL-PC2 P-Clip
CCL-SR Snap Ring
CCL-PL Power Lead (Length)
CCL-JB Junction Box
CCL-TB Terminal Block

Ordering Information:

CCL			
Series	Voltage	Spacing	Lamp Type
	12VAC	2" O/C	L-161
	24VAC	3" O/C	L-168
	<small>*Depending on Lamp Type</small>	4" O/C	L-194
		6" O/C	L-655
		8" O/C	L-656
		12" O/C	L-657
		<small>*Custom Spacing Available</small>	L-X12-5
			L-X24-5
			L-X24-7.5



Ordering Example: CCL-12-2-L161-CCL1X

Catalog #		Type
Projects		
Comments		Date
Prepared By		

Transformer Requirements

Voltage	Transformer	VA	Circuits	L-161	L-194	L-168	L-655	L-657	L-X12-5	L-X24-5	L-X24-7.5
12VAC	T-1022-12-1-10	100VA	1	41	28	22			20		
12VAC	T-1023-12-1-10	150VA	1	62	42	33			30		
12VAC	T-1024-12-2-10	250VA	2	104	70	55			50		
12VAC	T-1025-12-2-20	500VA	2	208	141	110			101		
12VAC	T-1026-12-3-20	750VA	3	312	212	166			151		
12VAC	T-1027-12-4-20	1000VA	4	416	283	221			202		
24VAC	T-1022-24-1-5	100VA	1				22	50		18	11
24VAC	T-1023-24-1-7	150VA	1				33	75		31	17
24VAC	T-1024-24-1-20	250VA	1				55	126		45	28
24VAC	T-1025-24-1-20	500VA	1				110	252		90	56
24VAC	T-1026-24-2-15	750VA	2				165	379		135	85
24VAC	T-1027-24-2-20	1000VA	2				221	505		180	113

DIAGRAMS:

Lamp Specifications

LAMP#	VOLT	WATT	LUMENS	AVG.
L-161	12V	2.04W	9.43	28,000
L-168	12V	3.84W	28/00	10,000
L-194	12V	3.00W	18.90	17,500
L-655	24V	4.32W	22.24	26,000
L-657	24V	1.68W	5.84	52,000
L-X12-5	12V	4.08W	37.5	8,000
L-X24-5	24V	4.8W	34.5	5,000
L-X24-7.5	24V	7.5W	67.9	12,000